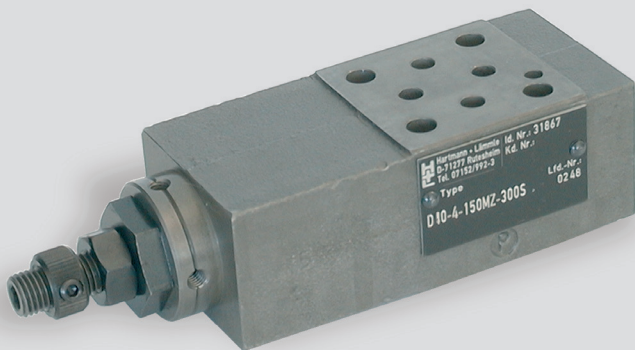


Pressure-Reduction Valve NG 4 ISO 4401, sandwich-plate



- damped piston valve
- small hysteresis
- several pressure steps
- different adjustment method

Technical Data

General

| | |
|---------------------|----------------------------|
| Symbol | please see symbol diagram |
| Type of valve | damped piston valve |
| Mounting method | M5 DIN 912 |
| Connection of ports | mounting plate |
| Mounting positions | mountable in any positions |
| Ambient temperature | -5 to +50 °C |
| Mass valve | 2.5 kg |
| Mass mounting plate | 0.8 kg |

Hydraulic

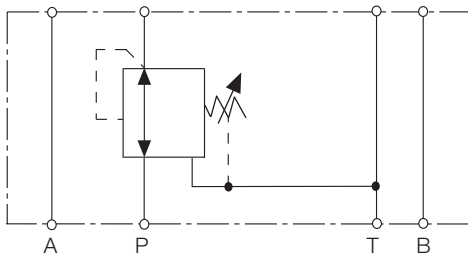
| | |
|---------------------------|---|
| Operation pressure | |
| Ports A, B | 3 - 30; 5 - 60; 10 - 150 oder 20 - 250 bar |
| Hydraulic oil temperature | -5 to +70 °C |
| Viscosity range | 10 to 300 mm ² /s |
| Operating flow range | see characteristic curve |

Options

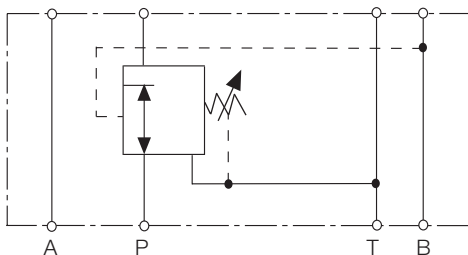
- measuring connection 1/8"

Symbol

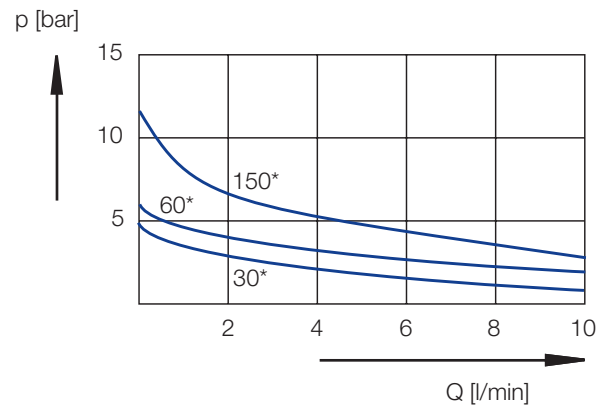
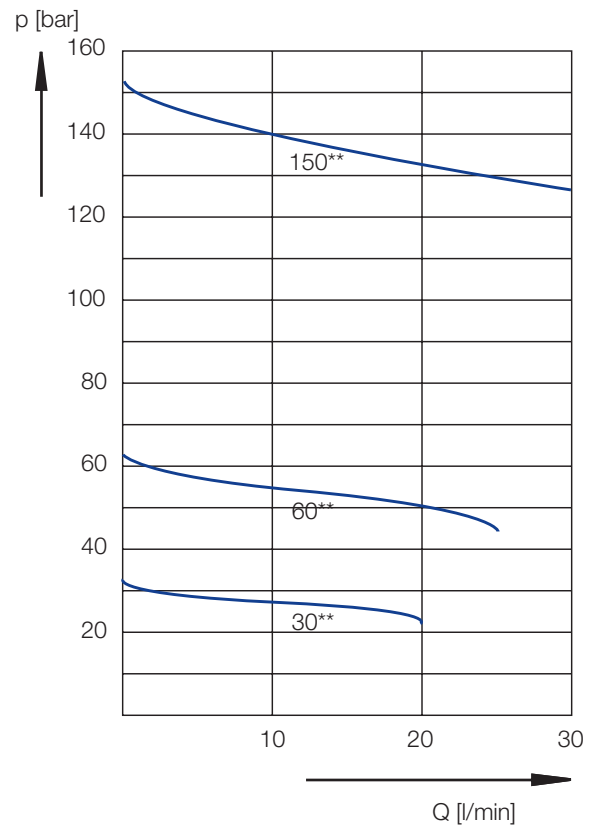
D40 pressure reduction in P



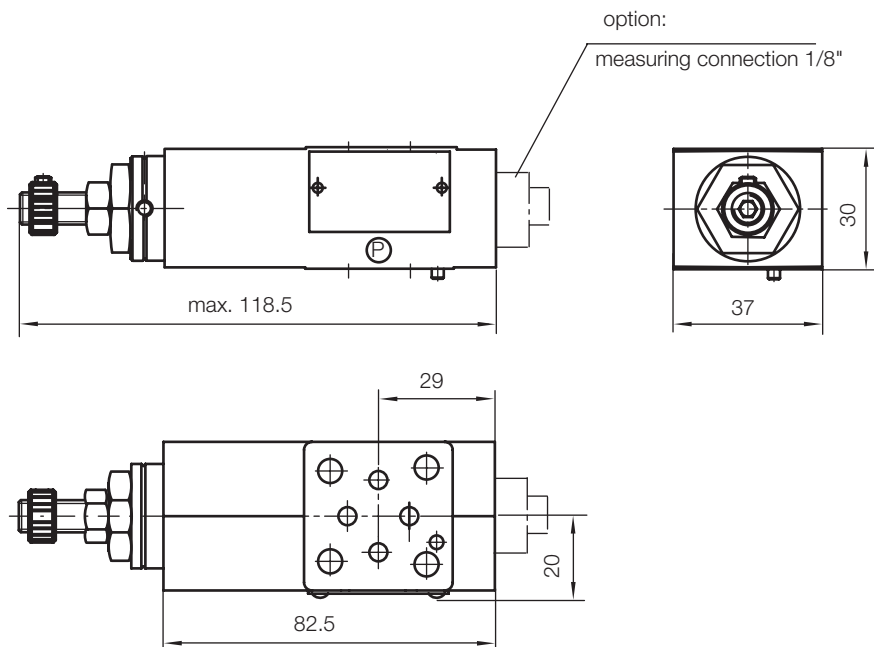
D41 pressure reduction in B



Characterstic curve

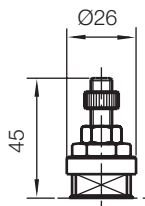


Dimensional Drawing

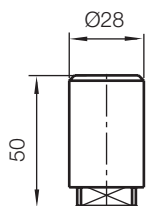


Adjustment Methods

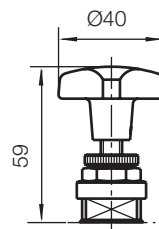
design S
S = setting screw



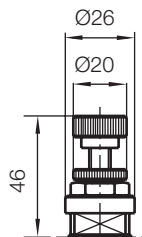
design K; P
K = cover
P = cover with lead seal



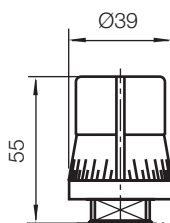
design G
G = star knob



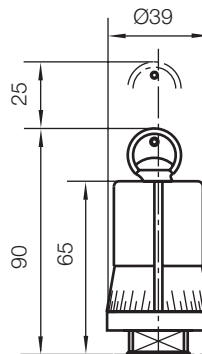
design H
H = handwheel



design D
D = rotary knob

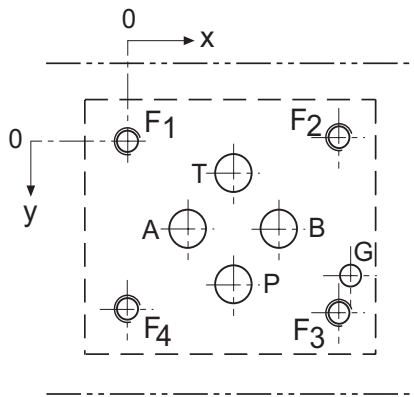


design V
V = rotary knob and lock



all dimensions in mm

Port Connection Pattern NG 4 ISO 4401



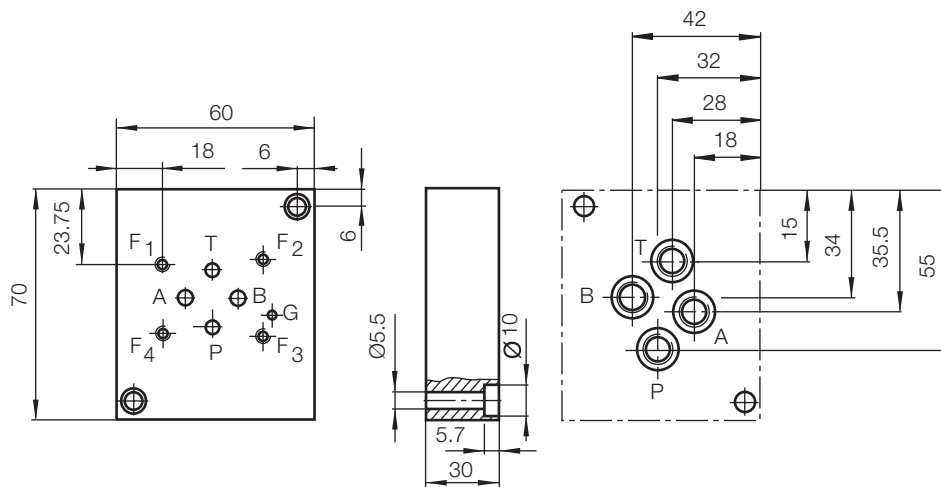
view: fastening side of mounting plate

| | P | A | T | B | F1 | F2 | F3 | F4 | G |
|------------|-------|-------|------|-------|----|-------|-------|------|-------|
| Ø max [mm] | 4.5 | 4.5 | 4.5 | 4.5 | - | - | - | - | 3.4 |
| x [mm] | 12 | 4.3 | 12 | 19.7 | 0 | 24 | 24 | 0 | 26.5 |
| y [mm] | 20.25 | 11.25 | 2.25 | 11.25 | 0 | -0.75 | 23.25 | 22.5 | 17.75 |

F: M5, thread depth min. 1.5 x Ø

G: bore hole depth min. 1.5 x Ø

Single-Unit Mounting Plate



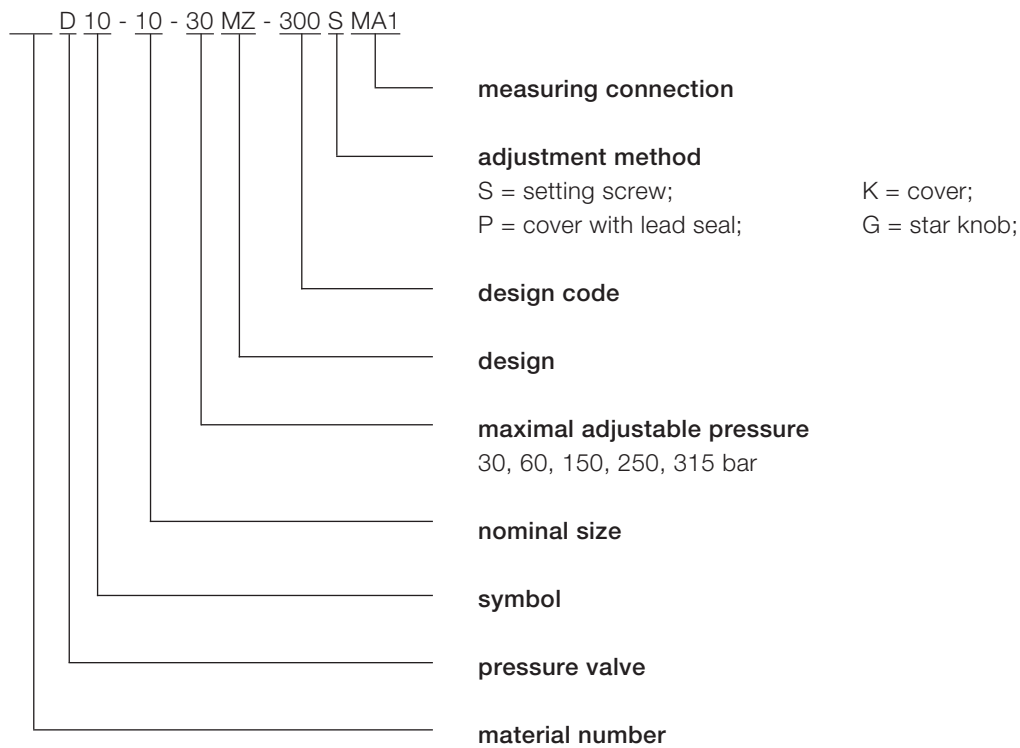
Order number single-unit mounting plate:

PW4M-G1-400, pipe connections R1/8"

PW4M-G2-400, pipe connections R1/4"

Multiple-unit mounting plate on request.

Type Code



Voith Turbo H + L Hydraulic GmbH & Co. KG
Schuckertstraße 15
71277 Rutesheim, Germany
Tel. +49 7152 992-3
Fax +49 7152 992-400
sales-rut@voith.com

voith.com



VOITH
Engineered Reliability